

Technical data

1.Nominal voltage: 300V/8A

PITCH:3.81mm

2.Connection capacity:  
AWG 30-16

3.Insulation Withstands Voltage:  
AC 1600V/MIN

4.Insulation Resistance:  
1000M $\Omega$  or more at DC500V

5.Tightening torque:  
2.3kgf.cm (2 Lb-in / 0.23N.m)

6.Screw thread: M2

7.Stripping length: 6-7mm

8.Using temperature range:-40C~115C°

9.Undimensioned Tolerances:

Dim.L=P $\times$ 3.81+0.3 Dim.B=(P-1) $\times$ 3.81 P= number of poles	Dim B	Dim L
0-30mm	$\pm 0.15$	$\pm 0.20$
over 30mm-60mm	$\pm 0.20$	$\pm 0.25$
over 60mm-90mm	$\pm 0.25$	$\pm 0.30$
over 90mm	$\pm 0.30$	$\pm 0.40$

10.Safety approval: 

11.RoHS Compliance

12.Critical dimension: 

MBFW381 xx x xxx

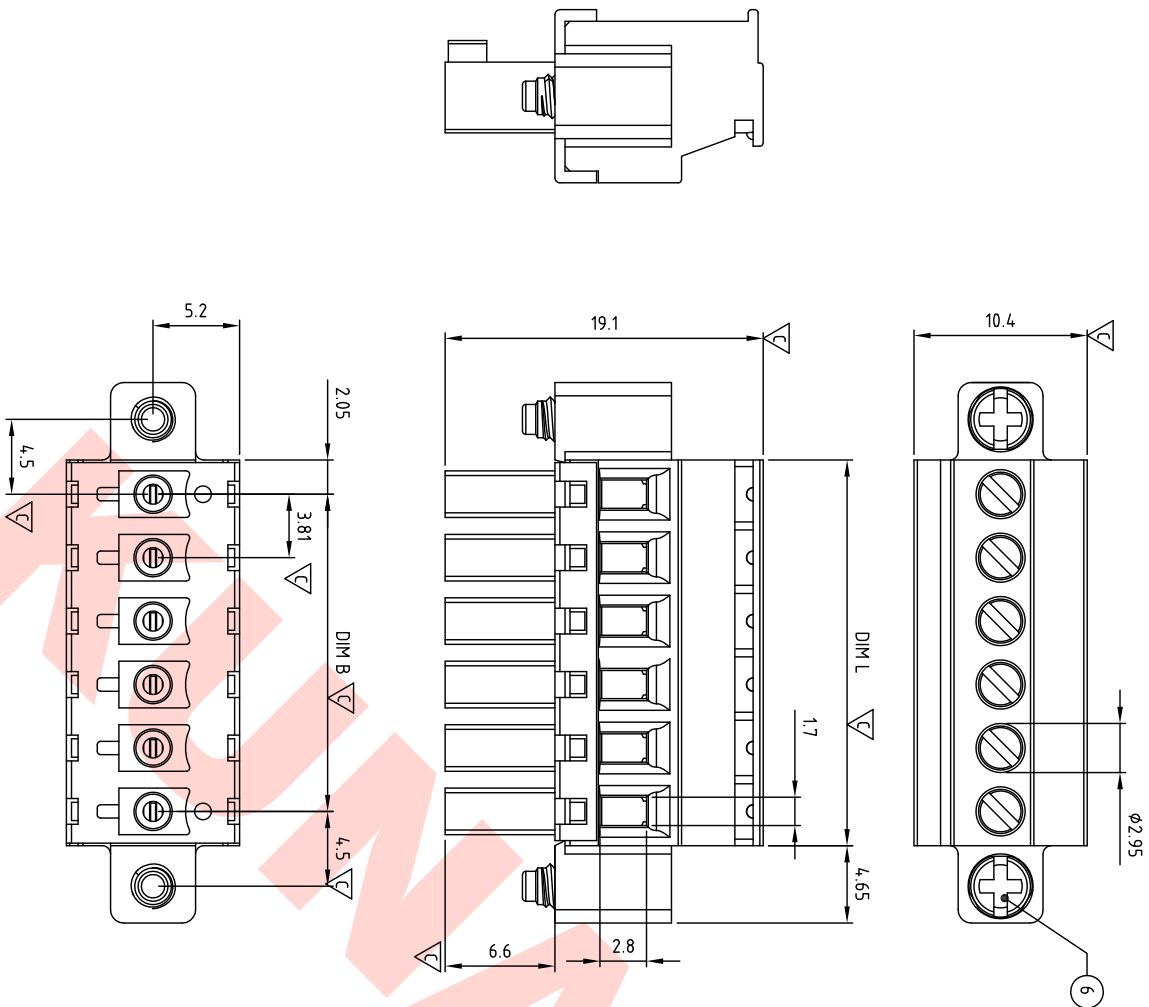
① Poles 02-24

② Color

0 Black 3 Orange 5 Green 6 Blue G Pale Gray.....

③ Custom

000 K MARK 00K KUNACON MARK .....



6	FLANGE SCREW	STEEL	M2.5 $\times$ 0.45, Zn Plated	2
5	CAGE	BRASS	M2.0 $\times$ 0.4, Ni PLATED	P
4	SCREW	STEEL	M2.0 $\times$ 0.4, Zn Plated	P
3	WIRE GUARD	BRONZE (PbZ)	TIN PLATED	P
2	COVER	PA66 UL94V-0	ALL COLOR	1
1	BODY	PA66 UL94V-0	ALL COLOR	1

ITEM	NAME OF PART	MATERIAL	NOTES
------	--------------	----------	-------

DWG	WF. Zhang	DATE	2016.03.10	UNITS	MM	SHEET	1 OF 1	Tolerance
-----	-----------	------	------------	-------	----	-------	--------	-----------

CHK.	WF. Zhang	DATE	2016.03.30	SCALE	NONE 2.5:1 (.)	REV.	A	X
------	-----------	------	------------	-------	----------------	------	---	---

APP.	Marvin Zhang	DATE	2016.03.30	TITLE	MB-FW381 Series W/Flange X.X	X.XX	$\pm 0.30$
------	--------------	------	------------	-------	------------------------------	------	------------

PART NO.	MBFW381xxxxxx	X.XX	$\pm 0.10$
----------	---------------	------	------------

DWG NO.	MB-F381-B002	X <sup>*</sup>	$\pm 1^*$
---------	--------------	----------------	-----------

 KUNA Contact Technology Co. Ltd  
http://www.kunacon.com

DATE	DATE	DATE
CHK.	CHK.	CHK.
DESCRIPTION	DESCRIPTION	DESCRIPTION
SIGN	SIGN	SIGN